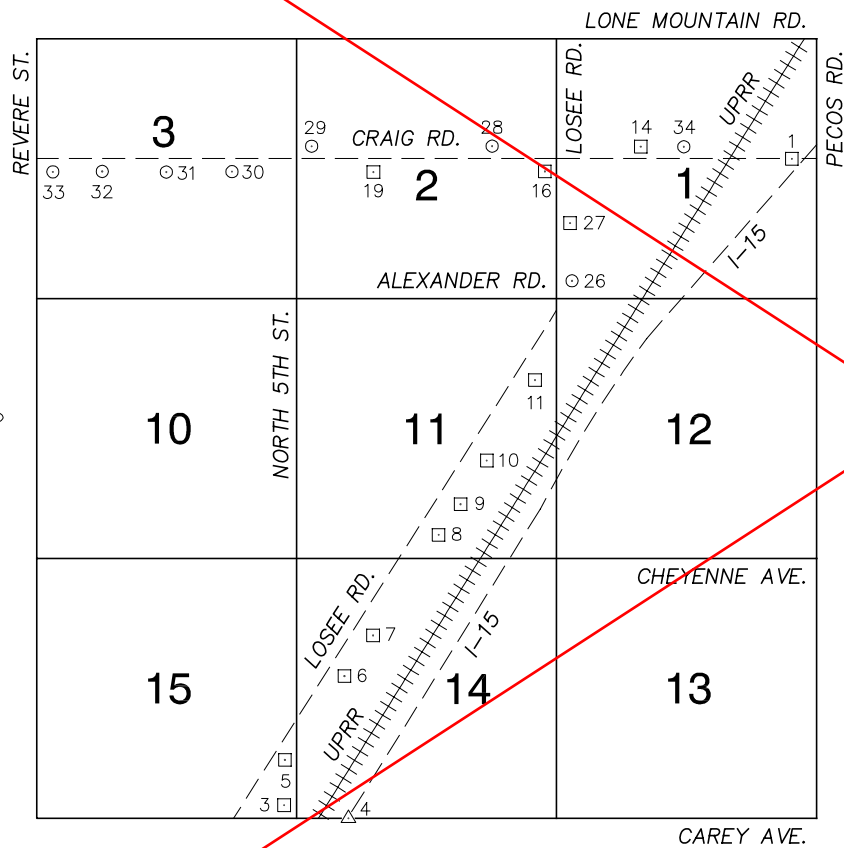


FOR REFERENCE ONLY

*2018 BENCHMARK NETWORK ADJUSTMENT SUPERSEDES THE 2003 BENCHMARK BOOK

**Township 20 South, Range 61 East
Northeast Quarter**



NORTH AMERICAN VERTICAL
DATUM OF 1988
- ALL ELEVATIONS IN METERS -

No.	STATION	ELEVATION (METERS)	DESCRIPTION
1	6C01 1E6	592.845	F N D RIVET AND SQUARE ALUMINUM PLATE IN TOP OF CURB IN THE CONCRETE CENTERLINE ISLAND ON CRAIG RD. NEAR THE WEST END OF THE I-15 OVERPASS.
2			LOST 2003
3	7C01 15SES	591.380	F N D RIVET AND SQUARE ALUMINUM PLATE IN TOP OF CURB, NORTHEAST CORNER OF LOSEE RD. AND CAREY AVE. NEAR THE PC OF LOSEE RD.
4	Q 399 1980	589.230	F N D USC&GS BRASS CAP, SET VERTICALLY IN NORTH FACE OF SOUTH CONCRETE BRIDGE SUPPORT COLUMN OF THE CAREY/I-15 OVERPASS JUST EAST OF RAILROAD TRACKS.
5	7C01 15SEE6	590.198	F N D RIVET AND SQUARE ALUMINUM PLATE IN TOP OF CURB, EAST SIDE OF LOSEE RD. NEAR THE NORTH PROPERTY LINE OF 2608 LOSEE RD.
6	7C01 14SWW6	588.301	F N D RIVET AND SQUARE ALUMINUM PLATE IN TOP OF CURB, EAST SIDE OF LOSEE RD. NEAR THE SOUTH PROPERTY LINE OF 2860 LOSEE RD. BY A METAL LIGHT POLE.
7	7C01 14NW6	587.355	F N D RIVET AND SQUARE ALUMINUM PLATE IN TOP OF CURB, NORTHEAST CORNER OF LOSEE RD. AND BROOKS AVE. NEAR A FIRE HYDRANT.
8	7C01 11S4	588.075	F N D RIVET AND SQUARE ALUMINUM PLATE IN TOP OF CURB, NORTHEAST CORNER OF LOSEE RD. AND CHEYENNE AVE. NEAR THE PC OF LOSEE RD.
9	7C01 11SE6	583.459	F N D RIVET AND SQUARE ALUMINUM PLATE IN TOP OF CURB, NORTHEAST CORNER OF LOSEE RD. AND COLTON AVE. JUST NORTH OF SMALL CONCRETE DRAINAGE DITCH, GOING EAST.
10	7C01 11E6	581.380	F N D RIVET AND SQUARE ALUMINUM PLATE IN TOP OF CURB, EAST SIDE OF LOSEE RD. NEAR GOWAN RD. ALIGNMENT, NEAR A FIRE HYDRANT.
11	7C01 11NEE6	581.096	F N D RIVET AND SQUARE ALUMINUM PLATE IN TOP OF CURB, EAST SIDE OF LOSEE RD. ACROSS THE STREET FROM 3823 LOSEE RD. NEAR A FIRE HYDRANT.

CLARK COUNTY VERTICAL CONTROL v.2003

CLARK COUNTY SURVEYOR'S OFFICE
5051 SOUTH PARADISE ROAD
LAS VEGAS, NEVADA 89119
(702) 455-0640

CONVERSION FACTOR:
METERS X $\left(\frac{3937}{1200}\right)$ = U.S. SURVEY FEET

REVISED 2003

SHEET
1 OF 2

**20-61
NE**

FOR REFERENCE ONLY

***2018 BENCHMARK NETWORK ADJUSTMENT SUPERSEDES THE 2003 BENCHMARK BOOK**

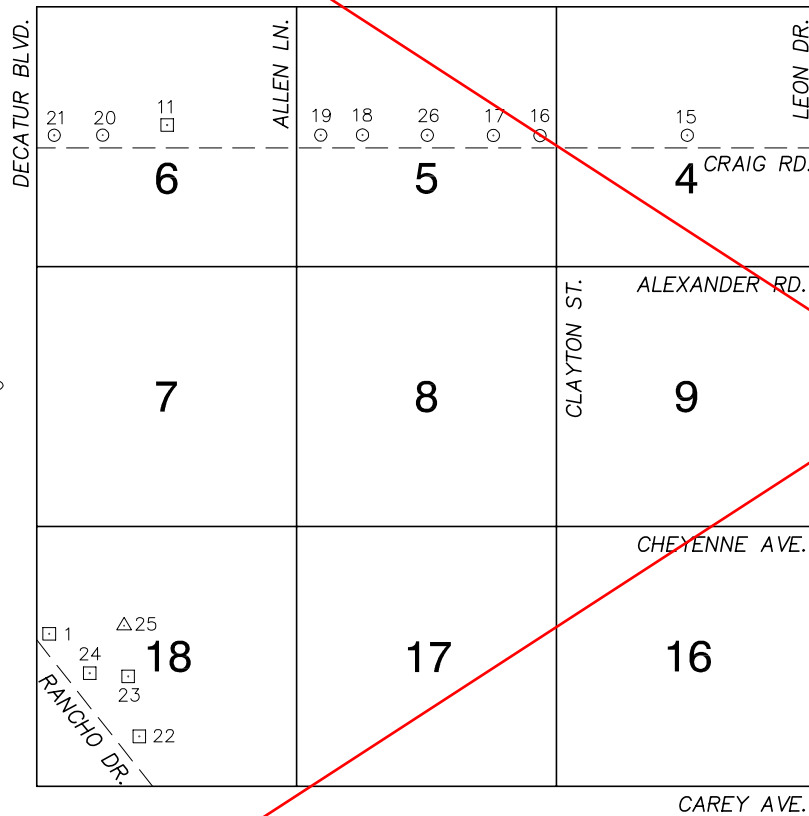
No.	STATION	ELEVATION (METERS)	DESCRIPTION	No.	STATION	ELEVATION (METERS)	DESCRIPTION
12			LOST 2003	25			LOST 2003
13			LOST 2003	26	NLV01 1SW5	581.963	F N D NORTH LAS VEGAS PIN AND PLATE IN TOP OF CURB, NORTHEAST CORNER OF LOSEE RD. AND ALEXANDER RD. NEAR THE PC OF ALEXANDER RD.
14	7C01 1W6	586.956	F N D RIVET AND SQUARE ALUMINUM PLATE IN TOP OF CONCRETE WINGWALL, NORTH SIDE CRAIG RD. WEST SIDE OF BERG ST.	27	7C01 1SW6 1997	585.273	S E T RIVET AND ROUND ALUMINUM PLATE IN TOP OF CURB, EAST SIDE OF LOSEE RD. AT O'NEIL DR. IN FRONT OF 4150 LOSEE RD.
15			LOST 2003	28	7C01 2E6 1997	590.161	S E T RIVET AND ROUND ALUMINUM PLATE IN TOP OF CURB, NORTHEAST CORNER OF LAWRENCE ST. AND CRAIG RD. NEAR THE PC OF CRAIG RD.
16	7C01 2E4	588.155	F N D RIVET AND SQUARE ALUMINUM PLATE IN TOP OF CURB, SOUTHWEST CORNER OF CRAIG RD. AND LOSEE RD. NEAR THE PC OF CRAIG RD.	29	NLV01 2W4	601.361	F N D NORTH LAS VEGAS PIN AND PLATE IN TOP OF CURB, NORTHEAST CORNER OF CRAIG RD. AND NORTH 5TH ST. NEAR THE PC OF CRAIG RD.
17			LOST 2003	30	7C01 3E6 1997	607.501	S E T RIVET AND ROUND ALUMINUM PLATE IN TOP OF CURB, SOUTHWEST CORNER OF CRAIG RD. AND GOLDFIELD ST. NEAR THE PC OF CRAIG RD.
18			LOST 2003	31	NLV01 3C4	613.334	F N D NORTH LAS VEGAS PIN AND PLATE IN TOP OF CURB, SOUTHEAST CORNER OF CRAIG RD. AND COMMERCE ST. NEAR THE PC OF CRAIG RD.
19	7C01 2W6	597.074	F N D RIVET AND SQUARE ALUMINUM PLATE IN TOP OF CURB, SOUTH SIDE OF CRAIG RD. 50' EAST OF DONNA ST.	32	7C01 3W6 1997	618.964	S E T RIVET AND ROUND ALUMINUM PLATE IN TOP OF CURB, SOUTHWEST CORNER OF CRAIG RD. AND KINGS HILL RD. 20' WEST OF THE PC OF CRAIG RD.
20			LOST 2003	33	7C01 3W4 1997	626.315	S E T RIVET AND ROUND ALUMINUM PLATE IN TOP OF CURB, SOUTHEAST CORNER OF CRAIG RD. AND REVERE ST. NEAR THE PC OF CRAIG RD.
21			LOST 2003	34	NLV01 1C4	586.488	F N D NORTH LAS VEGAS PIN AND PLATE IN TO OF CURB, NORTH SIDE OF CRAIG RD. 200' WEST OF RAILROAD TRACKS, 20' EAST OF BUS STOP #(8126).
22			LOST 2003	35			
23			LOST 2003	CLARK COUNTY VERTICAL CONTROL v.2003			
24			LOST 2003	CLARK COUNTY SURVEYOR'S OFFICE 5051 SOUTH PARADISE ROAD LAS VEGAS, NEVADA 89119 (702) 455-0640			CONVERSION FACTOR: METERS X $\left(\frac{3937}{1200}\right)$ = U.S. SURVEY FEET
				REVISED 2003	SHEET 2 OF 2	20-61 NE	

FOR REFERENCE ONLY

*2018 BENCHMARK NETWORK ADJUSTMENT SUPERSEDES THE 2003 BENCHMARK BOOK

Township 20 South, Range 61 East
Northwest Quarter

LONE MOUNTAIN RD.



NORTH AMERICAN VERTICAL
DATUM OF 1988
- ALL ELEVATIONS IN METERS -

No.	STATION	ELEVATION (METERS)	DESCRIPTION
1	7C01 18W4	673.509	F N D RIVET AND SQUARE ALUMINUM PLATE IN TOP OF CURB, SOUTHEAST CORNER OF RANCHO DR. AND DECATUR BLVD. ON THE NORTH SIDE OF AIRPORT ENTRANCE ROAD NEAR THE PC OF RANCHO DR.
2			LOST 2003
3			LOST 2003
4			LOST 2003
5			LOST 2003
6			LOST 2003
7			LOST 2003
8			LOST 2003
9			LOST 2003
10			LOST 2003
11	7C01 6C4	670.260	F N D RIVET AND SQUARE ALUMINUM PLATE IN TOP OF CURB, EAST SIDE OF VALLEY DR. AND 200' NORTH OF THE CENTERLINE OF CRAIG RD.

CLARK COUNTY VERTICAL CONTROL v.2003

CLARK COUNTY SURVEYOR'S OFFICE
5051 SOUTH PARADISE ROAD
LAS VEGAS, NEVADA 89119
(702) 455-0640

CONVERSION FACTOR:
METERS X $\left(\frac{3937}{1200}\right)$ = U.S. SURVEY FEET

REVISED 2003

SHEET
1 OF 2

20-61
NW

FOR REFERENCE ONLY

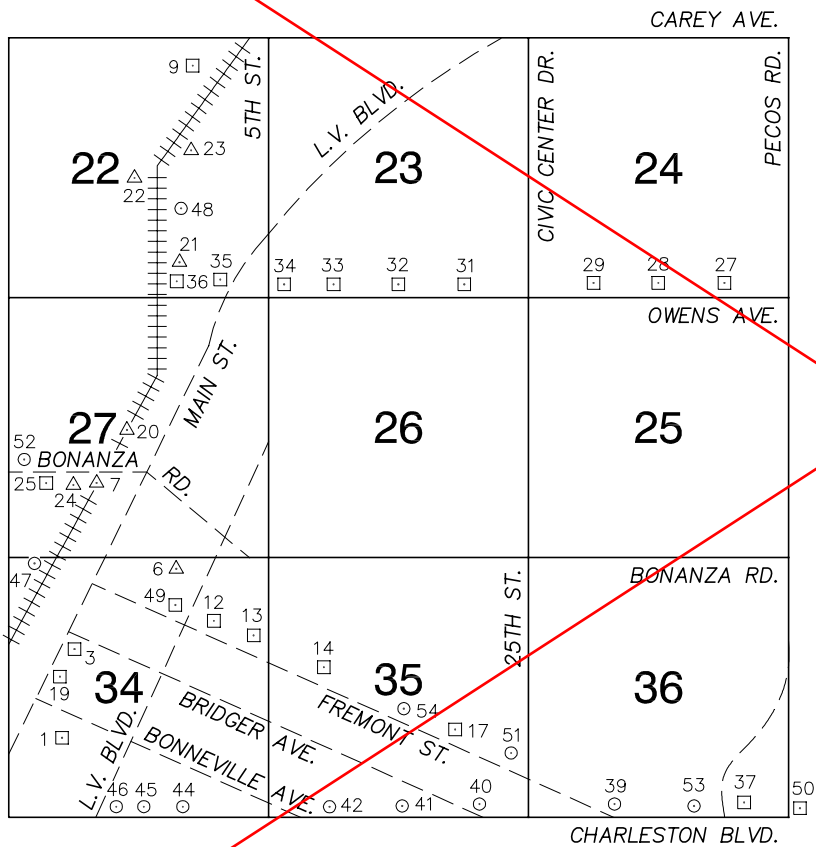
***2018 BENCHMARK NETWORK ADJUSTMENT SUPERSEDES THE 2003 BENCHMARK BOOK**

No.	STATION	ELEVATION (METERS)	DESCRIPTION	No.	STATION	ELEVATION (METERS)	DESCRIPTION
12			LOST 2003	25	FAA VGT A	667.665	FND STAINLESS STEEL ROD IN SLEEVE, LOCATED AT THE NORTH LAS VEGAS AIRPORT, 500' NORTHEAST OF THE ADMINISTRATION BUILDING IN A MEDIAN BORDERED BY TAXI WAYS "BRAVO" AND "CHARLIE"
13			LOST 2003	26	NLV01 5C4	656.922	FND NORTH LAS VEGAS PIN AND PLATE IN TOP OF CURB, NORTHEAST CORNER OF CRAIG RD AND SIMMONS ST. NEAR THE PC OF CRAIG RD.
14			LOST 2003	27			
15	NLV01 4C4	637.333	FND NORTH LAS VEGAS PIN AND PLATE IN TOP OF CURB, NORTHEAST CORNER OF CRAIG RD. AND CAMINO AL NORTE / MARTIN L. KING BLVD. NEAR THE PC OF CRAIG RD.	28			
16	NLV01 5E4	646.590	FND NORTH LAS VEGAS PIN AND PLATE IN TOP OF CURB, NORTHWEST CORNER OF CRAIG RD. AND CLAYTON ST. 19' WEST OF THE PC OF CRAIG RD.	29			
17	7C01 5E6 1997	652.761	SET RIVET AND ROUND ALUMINUM PLATE IN TOP OF CURB, NORTHEAST CORNER OF CRAIG RD. AND COLEMAN ST. NEAR THE PC OF CRAIG RD.	30			
18	7C01 5W6 1997	661.753	SET RIVET AND ROUND ALUMINUM PLATE IN TOP OF CURB, NORTHEAST CORNER OF CRAIG RD. AND FERRELL ST. NEAR THE PC OF CRAIG RD.	31			
19	NLV01 5W4	665.300	FND NORTH LAS VEGAS PIN AND PLATE IN TOP OF CURB, NORTHEAST CORNER OF CRAIG RD. AND ALLEN LN. NEAR THE PC OF CRAIG RD.	32			
20	7C01 6W6 1997	671.971	SET RIVET AND ROUND ALUMINUM PLATE IN TOP OF CURB, NORTHEAST CORNER OF CRAIG RD. AND SAN MATEO ST. NEAR THE PC OF CRAIG RD.	33			
21	NLV01 6W4	673.692	FND NORTH LAS VEGAS PIN AND PLATE IN TOP OF CURB, NORTHEAST CORNER OF CRAIG RD. AND DECATUR BLVD. NEAR THE PC OF CRAIG RD.	34			
22	NLV AP001	671.117	FND NORTH LAS VEGAS PIN AND PLATE IN TOP OF CURB, EAST SIDE OF RANCHO DR. IN THE NOSE OF AN ISLAND AT THE ENTRANCE TO THE NORTH LAS VEGAS AIRPORT. NOTE: IN 1992 BENCH BOOK POINT WAS ID NLV01 AP001.	35			
23	NLV AP002	668.508	FND RIVET AND SQUARE ALUMINUM PLATE IN CARD KEY BASE AT GATE #3 100' SOUTHEASTERLY FROM THE MAIN TERMINAL BUILDING.	CLARK COUNTY VERTICAL CONTROL v.2003			
24	NLV AP003	670.167	FND RIVET AND SQUARE ALUMINUM PLATE IN A TRANSFORMER PAD, 300' NORTHWESTERLY FROM THE MAIN TERMINAL BUILDING IN THE CORNER OF THE PARKING LOT.	CLARK COUNTY SURVEYOR'S OFFICE 5051 SOUTH PARADISE ROAD LAS VEGAS, NEVADA 89119 (702) 455-0640			CONVERSION FACTOR: METERS X $\left(\frac{3937}{1200}\right)$ = U.S. SURVEY FEET
				REVISED 2003		SHEET 2 OF 2	20-61 NW

FOR REFERENCE ONLY

*2018 BENCHMARK NETWORK ADJUSTMENT SUPERSEDES THE 2003 BENCHMARK BOOK

Township 20 South, Range 61 East
Southeast Quarter



NORTH AMERICAN VERTICAL
DATUM OF 1988
- ALL ELEVATIONS IN METERS -

No.	STATION	ELEVATION (METERS)	DESCRIPTION
1	6C01 34SW6	617.855	F N D RIVET AND SQUARE ALUMINUM PLATE IN CONCRETE BASE OF A STREET LIGHT POLE, EAST SIDE OF MAIN ST. AND 245' SOUTHWEST OF BONNEVILLE AVE.
2			LOST 2003
3	6C01 34W6	617.378	F N D NDOT DOME HEAD BRASS CAP IN TOP OF CURB, SOUTHEAST CORNER OF MAIN ST. AND BRIDGER ST. NEAR PC OF MAIN ST.
4			LOST 2003
5			LOST 2003
6	K 169 1935	613.667	F N D USC&GS BRASS CAP, STAMPED "K169 1935", IN TOP OF THE EAST END OF THE STEPS AT THE POST OFFICE, 3RD ST. AND STEWART AVE.
7	P 314 1965	615.568	F N D USC&GS BRASS CAP, STAMPED "P314 1965", IN TOP OF RETAINING WALL, SOUTH EDGE OF BONANZA RD. AT UNDERPASS AT RAILROAD TRACK LEVEL.
8			LOST 2003
9	7C01 22NE6	590.387	F N D RIVET AND SQUARE ALUMINUM PLATE IN TOP OF CURB, NORTHEAST CORNER OF LOSEE RD. AND THE SOUTH END OF CRESTLINE LOOP.
10			LOST 2003
11			LOST 2003

CLARK COUNTY VERTICAL CONTROL v.2003

CLARK COUNTY SURVEYOR'S OFFICE
5051 SOUTH PARADISE ROAD
LAS VEGAS, NEVADA 89119
(702) 455-0640

CONVERSION FACTOR:
METERS X $\left(\frac{3937}{1200}\right)$ = U.S. SURVEY FEET

REVISED 2003	SHEET 1 OF 3	20-61 SE
--------------	-----------------	-------------

FOR REFERENCE ONLY

***2018 BENCHMARK NETWORK ADJUSTMENT SUPERSEDES THE 2003 BENCHMARK BOOK**

No.	STATION	ELEVATION (METERS)	DESCRIPTION	No.	STATION	ELEVATION (METERS)	DESCRIPTION	
12	6C01 34E6	610.236	F N D RIVET AND SQUARE ALUMINUM PLATE IN TOP OF CURB, NORTHWEST CORNER OF 7TH ST. AND FREMONT ST. NEAR THE PC OF FREMONT ST.	25	7C01 27SW6	620.698	F N D RIVET AND SQUARE ALUMINUM PLATE IN TOP OF NORTH SIDE OF BARRIER WALL FOR CENTERLINE SUPPORT PILLARS FOR FREEWAY OVERPASS AT BONANZA RD. AND 8' WEST OF CENTERLINE OF EAST PILLAR AND V398.	
13	CLV 06135 B23	605.559	F N D CITY OF LAS VEGAS PIN AND PLATE IN TOP OF CURB, NORTHWEST CORNER OF 11TH ST. AND FREMONT ST. NEAR THE PC OF FREMONT ST.	26			LOST 2003	
14	6C01 35SW6	588.229	F N D RIVET AND SQUARE ALUMINUM PLATE IN TOP OF CURB ACROSS FROM 1600 FREMONT ST.	27	7C01 24SSE6	555.406	F N D RIVET AND SQUARE ALUMINUM PLATE IN TOP OF CURB, NORTHEAST CORNER OF OWENS AVE. AND PALMER ST. NEAR THE PC OF OWENS AVE.	
15			LOST 2003	28	7C01 24S4	557.239	F N D RIVET AND SQUARE ALUMINUM PLATE IN TOP OF CURB, NORTHEAST CORNER OF OWENS AVE. AND MOJAVE RD. NEAR A CROSSWALK SIGNAL POLE.	
16			LOST 2003	29	7C01 24SSW6	559.766	F N D RIVET AND SQUARE ALUMINUM PLATE IN TOP OF CURB, NORTHEAST CORNER OF OWENS AVE. AND PATRICIA ST. NEAR THE PC OF OWENS AVE.	
17	6C01 35SE6	572.582	F N D RIVET AND SQUARE ALUMINUM PLATE IN TOP OF CURB, NORTHWEST CORNER OF FREMONT ST. AND 21ST ST. NEAR THE PC OF FREMONT ST.	30			LOST 2003	
18			LOST 2003	31	7C01 23SSE6	565.750	F N D RIVET AND SQUARE ALUMINUM PLATE IN TOP OF CURB, NORTHEAST CORNER OF OWENS AVE. AND McDANIEL ST. NEAR THE PC OF OWENS AVE.	
19	CLV 06134B8	617.592	F N D CITY OF LAS VEGAS PIN AND PLATE, STAMPED "#06134B8", IN TOP OF CURB, NORTHEAST CORNER OF MAIN ST. AND LEWIS AVE. NEAR THE PC OF LEWIS AVE.	32	7C01 23S4	569.580	F N D RIVET AND SQUARE ALUMINUM PLATE IN TOP OF CURB, NORTHEAST CORNER OF OWENS AVE. AND BRUCE ST. NEAR THE PC OF OWENS AVE.	
20	Z 399 1980	611.583	F N D USC&GS BRASS CAP, STAMPED "Z399 1980", SET IN SIDEWALK JUST WEST OF RAILROAD TRACKS IN SOUTH END OF A BRIDGE OVER WASHINGTON AVE. AND WEST OF MAIN ST.	33	7C01 23SSW6	575.682	F N D RIVET AND SQUARE ALUMINUM PLATE IN TOP OF CURB, NORTHEAST CORNER OF OWENS AVE. AND WOODARD ST. NEAR THE PC OF OWENS AVE.	
21	N 399 1980	602.624	F N D USC&GS BRASS CAP, STAMPED "N399 1980", IN TOP OF ABUTMENT, NORTHEAST CORNER OF A RAILROAD BRIDGE OVER OWENS AVE. AND WEST OF LAS VEGAS BLVD.	34	7C01 23SWS	579.190	F N D RIVET AND SQUARE ALUMINUM PLATE IN TOP OF CURB, NORTHEAST CORNER OF OWENS AVE. AND LAS VEGAS BLVD. NEAR THE PC OF OWENS AVE.	
22	P 399 1980	595.949	F N D USC&GS BRASS CAP IN TOP OF CONCRETE BARRIER WALL WEST SIDE OF RAILROAD TRACKS ON THE NORTH SIDE OF LAKE MEAD BLVD. AT THE NORTHWEST CORNER OF A RAILROAD BRIDGE GOING OVER LAKE MEAD BLVD.	35	7C01 22SSE6	585.446	F N D RIVET AND SQUARE ALUMINUM PLATE IN TOP OF CURB, NORTHEAST CORNER OF OWENS AVE. AND DAVIS PL. NEAR THE PC OF OWENS AVE.	
23	V 170 1935	592.398	F N D USC&GS BRASS CAP IN TOP OF SOUTHEAST ABUTMENT OF RAILROAD BRIDGE OVER A DRAINAGE DITCH RUNNING EAST FROM LOSEE RD. AT MILLER AVE.	CLARK COUNTY VERTICAL CONTROL v.2003				
24	V 398 1980	621.258	F N D USC&GS BRASS CAP, STAMPED "V398 1980", SET VERTICALLY IN EAST FACE OF EAST FREEWAY SUPPORT PILLAR NEAR THE CENTERLINE OF BONANZA RD. POINT APPEARS TO HAVE BEEN VANDALIZED.	CLARK COUNTY SURVEYOR'S OFFICE 5051 SOUTH PARADISE ROAD LAS VEGAS, NEVADA 89119 (702) 455-0640			CONVERSION FACTOR: METERS X $\left(\frac{3937}{1200}\right)$ = U.S. SURVEY FEET	
						REVISED 2003	SHEET 2 OF 3	20-61 SE

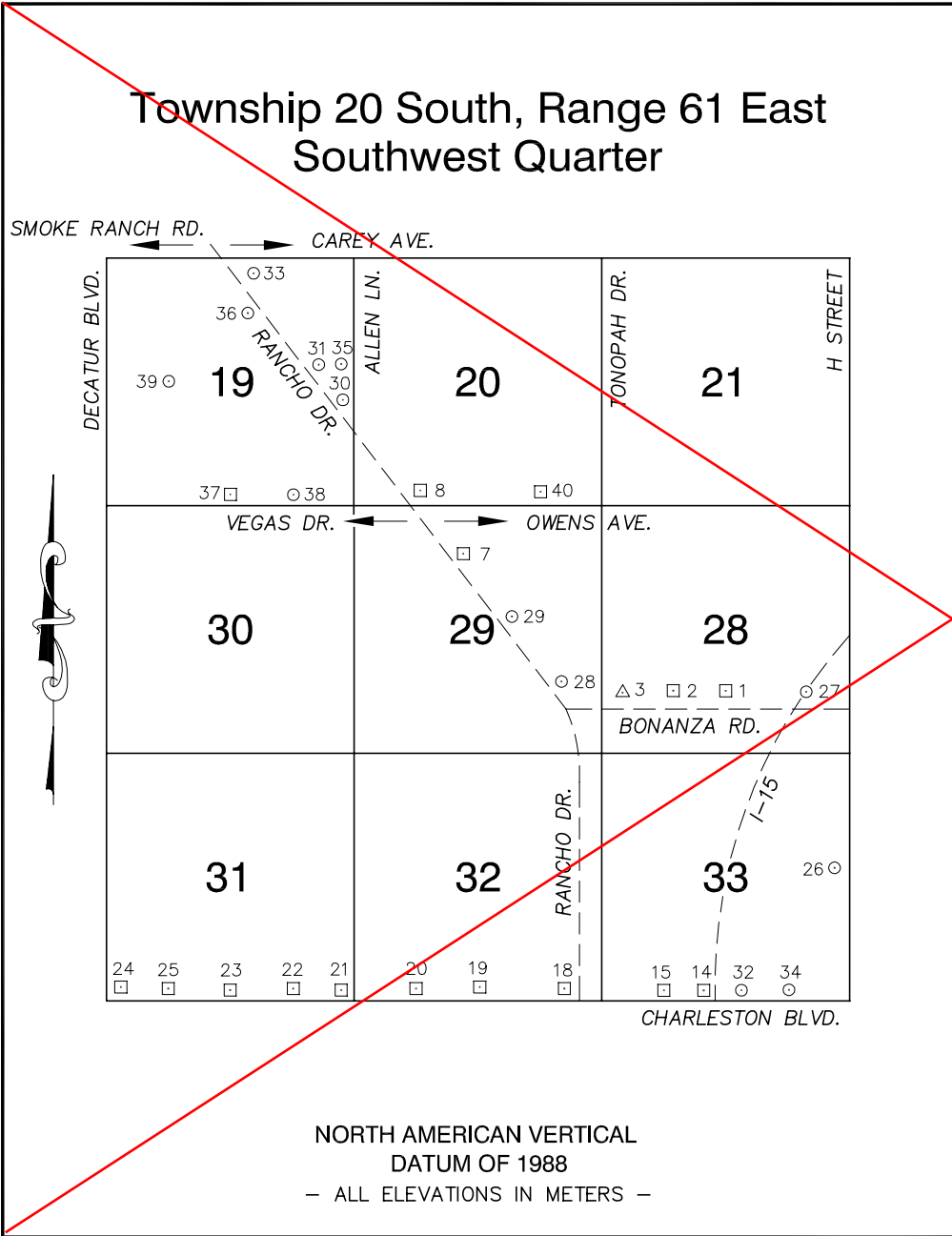
FOR REFERENCE ONLY

*2018 BENCHMARK NETWORK ADJUSTMENT SUPERSEDES THE 2003 BENCHMARK BOOK

No.	STATION	ELEVATION (METERS)	DESCRIPTION	No.	STATION	ELEVATION (METERS)	DESCRIPTION	
36	7C01 22S4	596.674	F N D RIVET AND SQUARE ALUMINUM PLATE IN TOP OF CURB, NORTH SIDE OF OWENS AVE. AT THE EAST FACE OF AND UNDER THE RAILROAD BRIDGE CROSSING OWENS AVE.	49	CLV FREMONT 5	611.759	F N D CITY OF LAS VEGAS PIN AND PLATE IN TOP OF CURB, NORTHEAST CORNER OF FREMONT ST. AND LAS VEGAS BLVD. NEAR THE PC OF LAS VEGAS BLVD.	
37	6C01 36SSE6	552.918	F N D RIVET AND SQUARE ALUMINUM PLATE IN TOP OF CURB, NORTHEAST CORNER OF CHARLESTON BLVD. AND PECOS RD./PALM ST. AT RANGE LINE TO SOUTH NEAR THE PC OF CHARLESTON BLVD.	50	2LV01 36SSE6	550.460	F N D CITY OF LAS VEGAS PIN AND PLATE IN TOP OF CURB, IN THE NORTHEAST CORNER OF PECOS ST. AND CHARLESTON BLVD. NEAR THE PC OF CHARLESTON BLVD.	
38			LOST 2003	51	GIS 826	567.195	F N D 2" BRASS CAP IN TOP OF CURB, WEST SIDE OF 25TH ST. AND 100' NORTH OF CHARLESTON BLVD.	
39	LV01 36SSW6	562.133	F N D CITY OF LAS VEGAS PIN AND PLATE IN TOP OF CURB, NORTHWEST CORNER OF 28TH ST. AND CHARLESTON BLVD. NEAR THE PC OF CHARLESTON BLVD. "NOT STAMPED"	52	2LV01 27SWW6	620.291	F N D CITY OF LAS VEGAS PIN AND PLATE IN TOP OF CURB, NORTHEAST CORNER OF BONANZA RD. AND "H" ST. NEAR 1/2 DELTA.	
40	OLV01 35SESA	570.898	F N D CITY OF LAS VEGAS PIN AND PLATE IN TOP OF CURB, NORTHWEST CORNER OF CHARLESTON BLVD. AND EASTERN AVE. NEAR THE PC OF CHARLESTON BLVD. "DEFACED"	53	2LV01 36S4	556.496	F N D CITY OF LAS VEGAS PIN AND PLATE IN TOP OF CURB, NORTHWEST CORNER OF MOJAVE RD. AND CHARLESTON BLVD. NEAR THE PC OF CHARLESTON BLVD.	
41	2LV01 35S4	579.048	F N D CITY OF LAS VEGAS PIN AND PLATE IN TOP OF CURB, NORTHEAST CORNER OF CHARLESTON BLVD. AND BRUCE ST. NEAR 1/2 DELTA.	54	7C01 35S6 1997	580.731	S E T RIVET AND ROUND ALUMINUM PLATE IN TOP OF CURB, NORTHWEST CORNER OF FREMONT ST. AND BRUCE ST. NEAR THE PC OF FREMONT ST.	
42	2LV01 35SSW6	587.134	F N D CITY OF LAS VEGAS PIN AND PLATE IN TOP OF CURB, NORTHEAST CORNER OF CHARLESTON BLVD. AND 17TH ST. NEAR 1/2 DELTA.	55				
43			LOST 2003	56				
44	2LV01 34SSE6	602.829	F N D CITY OF LAS VEGAS PIN AND PLATE IN TOP OF CURB, NORTHEAST CORNER OF CHARLESTON AND MARYLAND PKWY. NEAR 1/2 DELTA.	57				
45	CHAS. 10	609.559	F N D CITY OF LAS VEGAS PIN AND PLATE IN TOP OF CURB, NORTHEAST CORNER OF CHARLESTON BLVD. AND 10TH ST. NEAR THE PC OF CHARLESTON BLVD.	58				
46	CHAS. 5	615.618	F N D CITY OF LAS VEGAS PIN AND PLATE IN TOP OF CURB, NORTHEAST CORNER OF CHARLESTON BLVD. AND LAS VEGAS BLVD. NEAR 1/4 DELTA.	59				
47	7C01 34NNW6 1997	617.808	S E T RIVET AND ROUND ALUMINUM PLATE IN TOP OF CURB, ON TOP OF THE OGDEN OVERPASS, FOR THE U.P.R.R. WEST OF THE TRACKS.	CLARK COUNTY VERTICAL CONTROL v.2003				
48	7C01 22SE6 1997	598.152	S E T RIVET AND ROUND ALUMINUM PLATE IN THE NORTHEAST ABUTMENT OF A RAILROAD BRIDGE OVER FREEWAY AND NORTH OF FREEWAY AND EAST OF TRACKS.	CLARK COUNTY SURVEYOR'S OFFICE 5051 SOUTH PARADISE ROAD LAS VEGAS, NEVADA 89119 (702) 455-0640		CONVERSION FACTOR: METERS X $\left(\frac{3937}{1200}\right)$ = U.S. SURVEY FEET		
						REVISED 2003	SHEET 3 OF 3	20-61 SE

FOR REFERENCE ONLY

*2018 BENCHMARK NETWORK ADJUSTMENT SUPERSEDES THE 2003 BENCHMARK BOOK



No.	STATION	ELEVATION (METERS)	DESCRIPTION
1	7C01 28S6	626.298	F N D RIVET AND SQUARE ALUMINUM PLATE IN TOP OF CURB, NORTHWEST CORNER OF BONANZA RD. AND MARTIN L. KING BLVD. NEAR THE PC OF BONANZA RD.
2	7C01 28SW6	628.539	F N D RIVET AND SQUARE ALUMINUM PLATE IN TOP CURB, NORTH SIDE OF BONANZA RD. NEAR EAST PROPERTY LINE OF 1804 BONANZA RD.
3	W 398 1980	631.073	F N D USC&GS BRASS CAP, STAMPED "W398 1980", NORTHEAST CORNER OF BONANZA RD. AND TONOPAH DR. 25' NORTH OF NORTH CURB ON BONANZA RD., AND 2' WEST OF A 4' BLOCK WALL, EAST SIDE OF TONOPAH DR.
4			LOST 2003
5			LOST 2003
6			LOST 2003
7	7C01 29NW6	642.490	F N D RIVET AND SQUARE ALUMINUM PLATE IN TOP OF CURB, NORTHEAST CORNER OF RANCHO DR. AND RIVERSIDE DR. NEAR THE PC OF RANCHO DR.
8	7C01 20SWS	645.256	F N D RIVET AND SQUARE ALUMINUM PLATE IN TOP OF CURB, NORTHEAST CORNER OF VEGAS DR. AND RANCHO DR. NEAR THE PC OF RANCHO DR.
9			LOST 2003
10			LOST 2003
11			LOST 2003

CLARK COUNTY VERTICAL CONTROL v.2003

CLARK COUNTY SURVEYOR'S OFFICE
5051 SOUTH PARADISE ROAD
LAS VEGAS, NEVADA 89119
(702) 455-0640

CONVERSION FACTOR:
METERS X $\left(\frac{3937}{1200}\right)$ = U.S. SURVEY FEET

REVISED 2003

SHEET
1 OF 3

20-61
SW

FOR REFERENCE ONLY

***2018 BENCHMARK NETWORK ADJUSTMENT SUPERSEDES THE 2003 BENCHMARK BOOK**

No.	STATION	ELEVATION (METERS)	DESCRIPTION	No.	STATION	ELEVATION (METERS)	DESCRIPTION		
12			LOST 2003	25	7C01 31SSW6	665.025	F N D RIVET AND SQUARE ALUMINUM PLATE IN TOP OF CURB, NORTHEAST CORNER OF CHARLESTON BLVD. AND ESSEX DR. NEAR THE PC OF CHARLESTON BLVD.		
13			LOST 2003	26	7C01 33E4 1997	619.102	S E T RIVET AND ROUND ALUMINUM PLATE IN TOP OF CURB, NORTHEAST CORNER OF THE GOVERNMENT CENTER, 13' SOUTH AND 2' WEST OF A 8' BLOCKWALL.		
14	7C01 33S4	623.433	F N D RIVET AND SQUARE ALUMINUM PLATE IN TOP OF CURB, NORTHEAST CORNER OF CHARLESTON BLVD. AND DESERT LN. NEAR THE PC OF CHARLESTON BLVD.	27	2LV01 28SE6	623.148	S E T CITY OF LAS VEGAS PIN AND PLATE IN TOP OF CURB, NORTH SIDE OF BONANZA RD. BETWEEN 1000 AND 1132 BONANZA RD.		
15	7C01 33SSW6	625.839	F N D RIVET AND SQUARE ALUMINUM PLATE IN TOP OF CURB, NORTHEAST CORNER CHARLESTON BLVD. AND SHADOW LN. NEAR THE PC OF CHARLESTON BLVD.	28	7C01 29SE6 1997	635.183	S E T RIVET AND ROUND ALUMINUM PLATE IN TOP OF CURB, NORTHEAST CORNER OF BONANZA RD. AND RANCHO DR. NEAR THE 1/2 DELTA OF THE TURN OUT ON THE ISLAND.		
16			LOST 2003	29	7C01 29C4 1997	639.074	S E T RIVET AND ROUND ALUMINUM PLATE IN TOP OF CURB, NORTHEAST CORNER OF RANCHO DR. AND WASHINGTON AVE. NEAR THE PC OF RANCHO DR.		
17			LOST 2003	30	7C01 19SEE6 1997	650.689	S E T RIVET AND ROUND ALUMINUM PLATE IN TOP OF CURB, NORTHEAST CORNER OF RANCHO DR. AND HOLLY AVE. NEAR THE PC OF RANCHO DR.		
18	7C01 32SSE6	630.246	F N D RIVET AND SQUARE ALUMINUM PLATE IN TOP OF CURB, NORTHWEST CORNER OF CHARLESTON BLVD. AND RANCHO DR. NEAR THE PC OF CHARLESTON BLVD.	31	7C01 19E6 1997	656.588	S E T RIVET AND ROUND ALUMINUM PLATE IN TOP OF CURB, SOUTHEAST CORNER OF RANCHO DR. AND CORAN LN. NEAR THE PC OF RANCHO DR.		
19	7C01 32S4	634.118	F N D RIVET AND SQUARE ALUMINUM PLATE IN TOP OF CURB, NORTHEAST CORNER OF CHARLESTON BLVD. AND SHETLAND RD. NEAR THE PC OF CHARLESTON BLVD.	32	8C01 33SSE6 1998	621.954	S E T RIVET AND ROUND ALUMINUM PLATE IN TOP OF CURB, NORTHWEST CORNER OF CHARLESTON BLVD. AND GRAND CENTRAL PKWY. NEAR THE PC OF CHARLESTON BLVD.		
20	7C01 32SSW6	639.739	F N D CITY OF LAS VEGAS PIN AND PLATE IN TOP OF CURB, NORTHEAST CORNER OF CHARLESTON BLVD. AND CAMPBELL DR. 44' EAST OF THE PC OF CHARLESTON BLVD., "NOT STAMPED"	33	7C01 19NNW6 1997	667.342	S E T RIVET AND ROUND ALUMINUM PLATE IN TOP OF CURB, SOUTHEAST CORNER OF RANCHO DR. AND CAREY AVE. NEAR THE PC OF RANCHO DR.		
21	7C01 31SES	646.322	F N D RIVET AND SQUARE ALUMINUM PLATE IN TOP OF CURB, NORTHWEST CORNER OF CHARLESTON BLVD. AND DOUGLAS DR.	34	7C01 33SSE6 1997	622.282	S E T RIVET AND ROUND ALUMINUM PLATE IN TOP OF CURB, CHARLESTON BLVD. AT THE U.P.R.R. TRACKS UNDERPASS NORTHWEST CORNER OF A HEADWALL.		
22	7C01 31SSE6	656.058	F N D RIVET AND SQUARE ALUMINUM PLATE IN TOP OF CURB, NORTHEAST CORNER OF CHARLESTON BLVD. AND VALLEY VIEW BLVD. NEAR THE PC OF CHARLESTON BLVD.	35	CNLV 01-19E4	648.648	F N D CITY OF NORTH LAS VEGAS RIVET AND PLATE IN TOP OF CURB, NORTHWEST CORNER OF CORAN LN. AND ALLEN LN.		
23	7C01 31S4	661.258	F N D RIVET AND SQUARE ALUMINUM PLATE IN TOP OF CURB, NORTHEAST CORNER OF CHARLESTON BLVD. AND BEDFORD RD. NEAR THE PC OF CHARLESTON BLVD.	CLARK COUNTY VERTICAL CONTROL v.2003					
24	7C01 31SWS	670.294	F N D RIVET AND SQUARE ALUMINUM PLATE IN TOP OF CURB, NORTHEAST CORNER OF CHARLESTON BLVD. AND DECATUR BLVD. NEAR THE PC OF CHARLESTON BLVD.	CLARK COUNTY SURVEYOR'S OFFICE 5051 SOUTH PARADISE ROAD LAS VEGAS, NEVADA 89119 (702) 455-0640			CONVERSION FACTOR: METERS X $\left(\frac{3937}{1200}\right)$ = U.S. SURVEY FEET		
							REVISED 2003	SHEET 2 OF 3	20-61 SW

FOR REFERENCE ONLY

***2018 BENCHMARK NETWORK ADJUSTMENT SUPERSEDES THE 2003 BENCHMARK BOOK**

No.	STATION	ELEVATION (METERS)	DESCRIPTION	No.	STATION	ELEVATION (METERS)	DESCRIPTION
36	2LV01 19N6	663.679	F N D CITY OF LAS VEGAS RIVET AND ALUMINUM PLATE IN TOP OF CURB, SOUTHWEST CORNER OF LAKE MEAD BLVD. AND RANCHO DR. NEAR 1/2 DELTA.	49			
37	0LV01 19S4	661.417	F N D CITY OF LAS VEGAS RIVET AND ALUMINUM PLATE IN TOP OF CURB, NORTHWEST CORNER OF VEGAS DR. AND VALLEY DR. NEAR THE PT OF VEGAS DR.	50			
38	0LV01 19SSE6	655.596	F N D CITY OF LAS VEGAS RIVET AND ALUMINUM PLATE IN TOP OF CURB, NORTHWEST CORNER OF VEGAS DR. AND MOUNTAIN TRAIL.	51			
39	2LV01 19W6	668.135	F N D CITY OF LAS VEGAS RIVET AND ALUMINUM PLATE IN TOP OF CURB, SOUTHWEST CORNER OF LAKE MEAD BLVD. AND MADELINE DR. NEAR 1/2 DELTA.	52			
40	2LV01 20SSE6	633.187	F N D CITY OF LAS VEGAS RIVET AND ALUMINUM PLATE IN TOP OF CURB, NORTH SIDE OF VEGAS DR. ±200' WEST OF MANHATTAN DR.	53			
41				54			
42				55			
43				56			
44				57			
45				58			
46				59			
47				CLARK COUNTY VERTICAL CONTROL v.2003			
48				CLARK COUNTY SURVEYOR'S OFFICE 5051 SOUTH PARADISE ROAD LAS VEGAS, NEVADA 89119 (702) 455-0640		CONVERSION FACTOR: METERS X $\left(\frac{3937}{1200}\right)$ = U.S. SURVEY FEET	
				REVISED 2003	SHEET 3 OF 3	20-61 SW	